



## Mrs. Lee's 4th Grade Class

By April Lee,  
4th Grade



Fourth graders have been working hard going through the writing process. They created their own gingerbread person adventure inside their paper crafted ovens. "This is such a wonderful and creative group, which has made for some very interesting stories."

## Counselor's Corner

By Bonnie Grumbach,  
K-12 Athletic Director & Counselor



### Senior Checklist

-If you haven't filled out the FAFSA or WASFA, Do it

this month!

-Review your Student Aid Report (SAR) online at [www.fafsa.gov](http://www.fafsa.gov). Check that you listed all the colleges you are considering. If your SAR asks for additional information, or if you need to make a correction, do so ASAP.

-Register for the SAT or ACT test if needed. Talk to your counselor if you need a test fee waiver (continued on pg. 2).

## Eighth Grader Students Create Human Heart Models in Engineering Class

By April Barreca,  
7-12 Science



Eighth Grade students in engineering class created models of how the human heart pumps blood. After the models were completed they shared them with some elementary classes.

## Sports Seasons to Begin

By Bonnie Grumbach,  
K-12 Athletic Director & Counselor

WIAA and our NE 1B League has put together a sports seasons calendar to hopefully return to play. This of course is all contingent upon the phases we are in within our eastern region. At this time, barring approval, the follow is what has been decided upon:

Season 1: Traditional Fall Sports **Feb.1 – March 13** (6 wks)

Season 2 – Spring Sports: **March 15 – May 8** (8 wks)

Season 3 – Winter Sports: **May 10 – June 19** (6 wks)

On February 1, Curlew athletes will begin practicing/conditioning for their respective fall sports. Cross Country is cleared to compete in phase 1, however football, volleyball and cheer must wait until we reach phase 2 in order to compete.

## Notices from the Office

The yearbooks for academic year 2019-2020 are now on sale for \$xx.xx. Also, as a reminder, please drive safely in the school parking lot, and keep an eye out for our students.

## Important Dates

Feb 2: End of First Semester

Feb 4: MAPS testing

Feb 11: MAPS testing

Feb 15: **No School**, President's Day

Feb 18: School Board Meeting & MAPS testing

Mar 15: Merrill Scholarship due

Mar 24: School Day SAT

Apr 1: Local scholarships due

## Tentative Volleyball Schedule (this is dependent on if we go to Phase 2 of COVID restrictions.)

Feb 9: Home, Republic

Feb 13: Home, Cusick & Selkirk

Feb 16: Away, Columbia

Feb 18: Away, Northport

Feb 23: Home, Inchelium

# Letter from the Principal

By Wyatt Ladiges,  
K-12 Principal



I hope everyone was able to enjoy our well-deserved winter break. As the new year begins, students at

Curlew School are wrapping up their first semester of classes and gearing up for the second half of the school year. Students, staff, and families have worked hard to make this the best school year possible. Together we have overcome many obstacles and together we will finish this year with successful outcomes.

Our staff works tirelessly to provide the best education for our students. Every day, students are engaged in many meaningful educational activities. I encourage you to talk with your child and stay informed about the things they are learning. Winter MAPs testing has started! We are seeing many positive results and look forward to sharing them with you. Way to go students! Teachers use MAPs scores to adjust and fine-tune their instruction to meet the needs of their students.

Thank you for sending your students to Curlew School. I am grateful to have the opportunity to serve our students with in-person instruction. With your help, we have been able to re-

main open and provide meaningful educational opportunities in a safe and healthy way. Thank you for supporting our students by encouraging them to wear masks while at school, frequently wash their hands, maintain social distancing, and stay home when feeling ill. We continue to provide students with several opportunities to be outside to enjoy the fresh air. You can help us by sending your child to school with adequate clothing. Warm clothing will protect your child from the elements during outdoor recess and breaks as well as when traveling to and from school. We are continuing to do all we can here to ensure the facility and classrooms are as safe as possible.

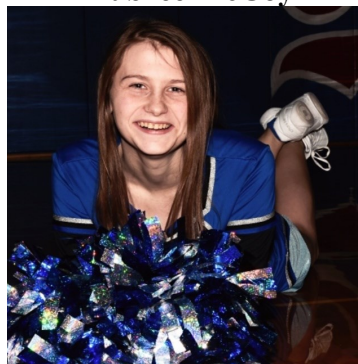
This school year has been filled with many challenges and a fair amount of uncertainty, yet we remain undeterred in our pursuit to help students achieve their highest potential. I remain positive and hopeful in this meaningful work and encourage others to do the same. If you have questions, would like information or would like to be more involved at Curlew School please feel free to reach out to me any time.

Go Cougars!!!  
~Wyatt

## Senior Athletes of the Month

By Bonnie Grumbach

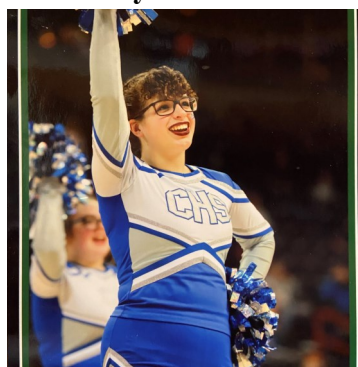
### Aubree McCoy



#### Activities Participated in:

1 year winter cheer

### Emily McElheran



#### Activities Participated in:

3 years of volleyball  
1 year of winter cheer  
2 years of track  
1 year XC  
3 years of drama  
3 years of NHS  
3 years of ASB  
2 years of Student Council  
1 year of FFA

## Counselor's Corner

(continued from page 1)  
By Bonnie Grumbach,  
K-12 Athletic Director & Counselor

-Complete scholarship applications (continued on page 2).

### *Searching For Scholarships*

Check out the Curlew School Website under Students, Counselor Corner for all types of Scholarships, both local and national as well as career and college information.

### **Bully Blockers**

Ms. Grumbach has been visiting the elementary and junior high classes talking to students about bullying. We have learned that bullying must be intentional, repeated, and one-sided. Students are taught to use strategies in which they can deal with such incidents themselves. If their attempts to stop the bully are not effective, they are encouraged to tell an adult who can help. Next month we will continue our lessons on how to be a good friend.

## Student's Play Music at Lunch

By Connie Fletcher  
K-12 Music Teacher



Hannah Jackson performed several original

tunes in the cafeteria during lunch time Friday, January 29. The room full of 7-12 graders joined in when she sang Country Roads. During January, Jaden Harrington and Nicholas Baker also performed, and Mrs. Wanda Fletcher will perform for the students February

# Lunch Menu

<b>1 Feb</b>	Hawaiian sandwich, veggie, fruit Bagels, fruit
<b>2 Feb</b>	Tomato soup, cheese stick, hot roll, fruit Yogurt, fruit
<b>3 Feb</b>	Burritos, veggie, fruit Waffles, fruit
<b>4 Feb</b>	Egg rolls, veggie, fruit Scones, fruit
<b>5 Feb</b>	COOK'S CHOICE Muffins, fruit
<b>8 Feb</b>	Hot dogs, veggie fruit Cinnamon flop, fruit
<b>9 Feb</b>	Bean soup, hot roll, veggie, fruit Pancakes, fruit
<b>10 Feb</b>	Taco salad, fruit Breakfast bar, fruit
<b>11 Feb</b>	Mandarin chick, rice, veggie, fruit Cougar muffin, fruit
<b>12 Feb</b>	COOK'S CHOICE Cheese toast, fruit
<b>16 Feb</b>	Chicken & rice, soup, hot roll, veggie, fruit Cornbread, fruit
<b>17 Feb</b>	Chicken Caesar pasta salad, hot roll, fruit French toast, fruit
<b>18 Feb</b>	Baked potato, hot roll, fruit Biscuits & gravy, fruit
<b>19 Feb</b>	COOK'S CHOICE Maple bar, fruit
<b>22 Feb</b>	Nachos, veggie, fruit Bagel, fruit
<b>23 Feb</b>	Clam chowder, corn muffins, veggie, fruit Yogurt, fruit
<b>24 Feb</b>	Gyro, fruit Waffles, fruit
<b>25 Feb</b>	Chicken alfredo, hot roll, veggie, fruit Scones, fruit
<b>26 Feb</b>	COOK'S CHOICE Muffins, fruit

# Child Find

The Curlew School District offers screening activities for all children birth to 21 living in the school district, which are suspected of having a disability. Children are identified through screening activities performed by specialists at Curlew School. The purpose of the screening is to identify children who may have a disability that may qualify them for special services. Difficulties that may interfere with learning, if identified early, can be brought to the attention of specialists who can begin working with the child. The screening also assists the Curlew School District in planning programs and services for children with special needs. Locating children who may need special help is one way the school district is responsive to the educational needs of children in the community. If you feel that your child may have difficulties in areas of communication, self-help, academic, social skills, or behavior that may make it difficult to learn please contact Jaquelyn Harney, Special Education Teacher to set up a screening at [jaquelyn.harney@curlew.wednet.edu](mailto:jaquelyn.harney@curlew.wednet.edu)

## 10 Fastest Growing STEM Jobs

Rank	Job	Growth Rate	Workers Needed
1	Applications Software Developers	25.6%	241,500
2	Information Security Analysts	31.6%	35,500
3	Statisticians	30.7%	13,600
4	Operations Research Analysts	25.6%	28,100
5	Computer User Support Specialists	10.6%	70,900
6	Computer Systems Analysts	8.8%	56,000
7	Industrial Engineers	8.3%	23,800
8	Computer and Information Research Scientists	16.5%	5,200
9	Systems Software Developers	10.1%	42,600
10	Architects (Except Landscape & Naval) (Tle)	8.1%	11,200

**COUGAR TIMES**

Curlew School District  
P.O. Box 370  
Curlew, WA 99118

Non-Profit Bulk Rate  
U.S. Postage  
PAID  
Curlew, WA 99118  
Permit No. 8